

2016 | **FUSION**



Courtesy of Ford Motor Company



Go Further

FUSION | 2016



Courtesy of Ford Motor Company



Go Further



Motivating. With powerful gas choices.

Equip your gasoline-powered Fusion model with a standard 2.5L iVCT I-4 engine or one of 2 EcoBoost® turbocharged, direct-injection powerplants.¹

With robust low-end torque and virtually no turbo lag, EcoBoost technology squeezes maximum power from each drop of fuel – along with impressive efficiency.

Both efficient and responsive, the 1.5L EcoBoost¹ delivers 181 hp.² For more performance-minded drivers, select the 2.0L EcoBoost.¹ It provides an exhilarating 240 hp.²

With 2016 Fusion, the choice is always yours.



SE. Bronze Fire Metallic Tinted Clearcoat. Available equipment.

¹Available feature. ²Using 93-octane fuel.

2.5L iVCT I-4

6-speed SelectShift® automatic
175 horsepower

1.5L EcoBoost

6-speed SelectShift automatic
181 horsepower²

2.0L EcoBoost

6-speed SelectShift automatic
240 horsepower²



Captivating. Inside and out.

Relax in supportive, leather-trimmed, 10-way power, heated front seats.¹ Recharge your devices with a convenient 110-volt power outlet.¹ And enjoy the output from a well-balanced, 12-speaker audio system.¹

Stay connected with friends, family and others with Ford SYNC.^{®2} It delivers hands-free calls, music and more with simple voice commands. Once paired, it can download your contacts and play music from your device. SYNC. Say the word.



¹Available feature. ²Driving while distracted can result in loss of vehicle control. Only use mobile phones and other devices, even with voice commands, when it is safe to do so. Not all features are compatible with all phones. ³Driver-assist features are supplemental and do not replace the driver's attention, judgment and need to control the vehicle. ⁴Remember that even advanced technology cannot overcome the laws of physics. It's always possible to lose control of a vehicle due to inappropriate driver input for the conditions.

Enjoy an array of driver-assist technologies^{1,3} that empower you. These technologies can help you maintain your lane, make parallel parking easier, warn you before a collision happens, and also help you stay alert to traffic detected in blind spots as you drive forward, or to traffic nearing either side of the vehicle as you slowly back up.

Standard AdvanceTrac[®] electronic stability control⁴ helps keep things stable, particularly in inclement weather.

Exteriors This helpful guide is intended for selecting an exterior color – not features, options or a trim level.



White Platinum Metallic Tri-coat^{5,6}



Oxford White



Ingot Silver*



Ruby Red Metallic Tinted Clearcoat⁵



Bronze Fire Metallic Tinted Clearcoat⁵



Deep Impact Blue*



Tectonic*



Magnetic*



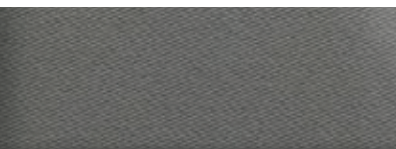
Guard*



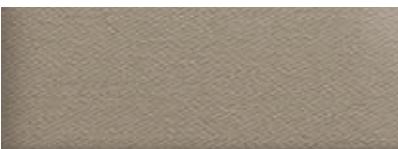
Shadow Black

*Metallic.

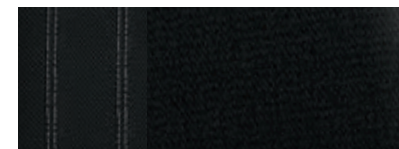
Interiors



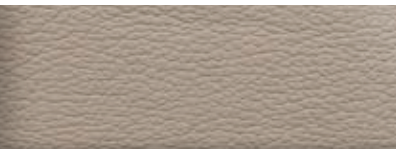
Medium Earth Gray Cloth



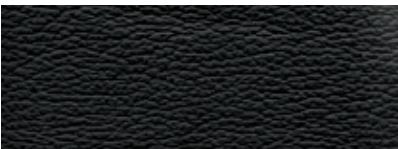
Dune Cloth



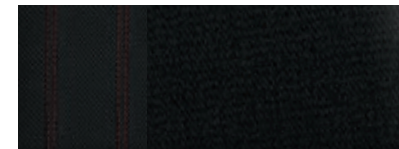
Ebony Cloth



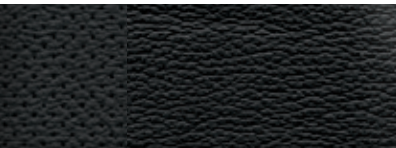
Dune Leather⁷



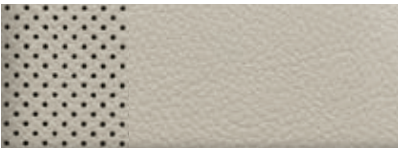
Charcoal Black Leather⁷



Ebony Cloth with Red Stitching⁸



Charcoal Black Leather with Perforated Inserts



Medium Soft Ceramic Leather with Perforated Inserts

⁵Additional charge. ⁶Not available on S. ⁷Luxury Package on SE. ⁸Appearance Package on SE. Colors are representative only. See your dealer for actual paint/trim options.

Standard Features

Mechanical
4-wheel disc Anti-Lock Brake System (ABS)
Electric parking brake
Electric power-assisted steering
Front-wheel drive (FWD)
Suspension – Front: Independent MacPherson strut
Suspension – Rear: Independent multilink
Interior
12-volt powerpoints (3)
Driver and front-passenger sun visors with illuminated vanity mirrors
Message center with trip computer
Power door locks
Power windows with global open/close and one-touch-up/-down feature
Steering wheel-mounted cruise and audio 5-way controls
Tilt/telescoping steering column
Exterior
Automatic halogen projector headlamps
Easy Fuel® capless fuel filler
Power sideview mirrors with integrated blind spot mirrors
Solar-tinted glass
Speed-sensitive windshield wipers
Safety & Security
3-point safety belts for all seating positions
AdvanceTrac® electronic stability control with brake-actuated traction control
Anti-theft perimeter alarm
Belt-Minder® front safety belt reminder
Child-safety rear door locks
Driver and front-passenger knee airbags¹
Emergency in-trunk release handle
Front-seat side airbags¹
Illuminated Entry System
LATCH – Lower Anchors and Tether Anchors for Children (rear seat positions)
MyKey®
Personal Safety System™ for driver and front passenger includes dual-stage front airbags,¹ safety belt pretensioners, safety belt energy management retractors, safety belt usage sensors, driver's seat position sensor, crash severity sensor, restraint control module and Front-Passenger Sensing System
Rear view camera
SecuriLock® Passive Anti-Theft System
Side-curtain airbags¹
SOS Post-Crash Alert System™
Tire Pressure Monitoring System (excludes spare)

S

Equipment Group 100A <i>Includes all standard features, plus:</i>
Mechanical
2.5L iVCT I-4 engine
6-speed SelectShift® automatic transmission with shifter button activation
Compact spare
Seating
6-way manual driver's seat
4-way manual front-passenger seat
4-way adjustable front head restraints
60/40 split fold-flat spring-assisted rear seat
Cloth seating
Interior
AM/FM stereo/single-CD player with MP3 capability and 4 speakers
Auxiliary audio input jack
Cruise control
Day/night rearview mirror
Ford SYNC® with voice-activated, in-vehicle communications and entertainment system with 4.2" color LCD screens in instrument cluster and center stack, and media hub with USB port
Front carpeted floor mats
Single-zone manual air conditioning
Exterior
16" painted aluminum wheels
Black rocker moldings
Body-color door handles
Body-color, power sideview mirrors
Single exhaust with bright tip
Available Options
All-weather floor mats
Inflatable rear safety belts
Trunk cargo mat

SE

Equipment Group 200A <i>Includes select S features, plus:</i>
Seating
6-way power front-passenger seat
10-way power driver's seat with power lumbar
Rear-seat fold-down center armrest with 2 cupholders
Interior
AM/FM stereo/single-CD player with MP3 capability and 6 speakers
Compass display
Outside temperature display
Rear air conditioning ducts
Rear carpeted floor mats
Exterior
17" Sparkle Silver-painted aluminum wheels
Body-color, power, heated sideview mirrors with security approach lamps and integrated turn signal indicators
Body-color rocker moldings
SecuriCode™ invisible keypad
Available Equipment Groups
<i>Equipment Group 201A – Appearance Package</i> includes 18" 5-spoke premium painted aluminum wheels, rear decklid spoiler, fog lamps, leather-wrapped steering wheel, EcoCloth seats, and Charcoal Black interior with contrasting red stitching on center console and seats
<i>Equipment Group 202A – Luxury Package</i> includes 1.5L EcoBoost® I-4 engine; driver's seat memory feature; heated front seats; leather-trimmed seats, steering wheel and shift knob; auto-dimming rearview mirror; fog lamps; chrome moldings around door windows; and power, heated sideview mirrors with memory, security approach lamps, auto-dimming driver's side, integrated turn signal indicators and integrated blind spot mirrors



16" Painted Aluminum
Standard: S



17" Sparkle Silver-Painted Aluminum
Standard: SE



18" Ebony Black Aluminum
Available: SE



18" Premium Luster Nickel-Painted Aluminum
Optional: SE



18" 5-Spoke Premium Painted Aluminum
Included: Appearance Package



18" Polished-Face Aluminum with Flash Gray-Painted Pockets
Standard: Titanium



19" H-Spoke Dark Stainless-Painted Aluminum
Optional: Titanium

Titanium

Equipment Group 300A <i>Includes select SE features, plus:</i>
Mechanical
2.0L EcoBoost I-4 engine with 6-speed SelectShift automatic transmission with paddle shifters
Seating
Leather-trimmed sport seats with 10-way power, heated front seats and driver's side memory with 3 settings
Interior
Aluminum brake and accelerator pedal covers
Aluminum front door-sill plates
Ambient lighting
Audio System from Sony® with AM/FM stereo/single-CD player with MP3 capability and 12 speakers in 10 locations
Auto-dimming rearview mirror
Dual-zone electronic automatic temperature control
Intelligent Access with push-button start (2 key fob transmitters)
Leather-wrapped steering wheel and shift knob
Remote Start System
SYNC with MyFord Touch voice-activated, in-vehicle communications and entertainment system with 2 configurable 4.2" color LCD screens in instrument cluster, 8" color LCD touch screen in center stack, and media hub with USB port and SD card reader

Exterior
18" polished-face aluminum wheels with Flash Gray-painted pockets
Body-color door handles with chrome insert
Body-color, power, heated sideview mirrors with memory, security approach lamps, auto-dimming driver's side, integrated turn signal indicators and integrated blind spot mirrors
Dual integrated bright exhaust tips
Fog lamps
Rear decklid spoiler
Reverse Sensing System
Available Options & Package
19" H-spoke dark stainless-painted aluminum wheels
Active park assist with Forward Sensing System
Adaptive cruise control and collision warning with brake support²
All-weather floor mats
Cooled front seats
Heated steering wheel
Inflatable rear safety belts
Power moonroof
Premium carpeted front and rear floor mats, plus trunk mat
Titanium Driver Assist Package ² includes BLIS (Blind Spot Information System) with cross-traffic alert, Lane-Keeping System, auto high beams, rain-sensing windshield wipers, and 110-volt power outlet
Trunk cargo mat

¹Always wear your safety belt and secure children in the rear seat. ²Availability varies by market. Sony is a registered trademark of the Sony Corporation.



Quality



Green



Safe



Smart

Comparisons based on competitive models (class is Midsize Sedans), publicly available information and Ford certification data at time of printing. Vehicles may be shown with optional equipment. Features may be offered only in combination with other options or subject to additional ordering requirements/limitations. Dimensions shown may vary due to optional features and/or production variability. Information is provided on an “as is” basis and could include technical, typographical or other errors. Ford makes no warranties, representations, or guarantees of any kind, express or implied, including but not limited to, accuracy, currency, or completeness, the operation of the information, materials, content, availability, and products. Ford reserves the right to change product specifications, pricing and equipment at any time without incurring obligations. Your Ford Dealer is the best source of the most up-to-date information on Ford vehicles.

Ford Genuine Parts & Service. Keep your vehicle in optimum operating condition with scheduled maintenance service. Ford and Lincoln Dealership technicians know your vehicle inside and out. They are continuously trained by Ford Motor Company and the parts they use are specifically designed for your vehicle. □ Ford Original Accessories will be warranted for whichever provides you the greatest benefit: 24 months/unlimited distance, or the remainder of your Bumper-to-Bumper 3-year/60,000-km New Vehicle Limited Warranty. Ford Licensed Accessories (FLA) are warranted by the accessory manufacturer’s warranty. FLA are designed and developed by the accessory manufacturer and have not been designed or tested to Ford Motor Company engineering requirements. Contact your Ford Dealer for details and/or a copy of all limited warranties.

ssa.ford.com

ssa.ford.com

Pecas Genuínas e Assistência Ford. Mantenha o seu veículo em perfeitas condições de funcionamento com o serviço de assistência periódica. Os técnicos dos concessionários Ford e Lincoln conhecem o seu veículo por dentro e por fora. Estes são formados de forma contínua pela Ford Motor Company e as peças que utilizam são desenhadas especificamente para o seu veículo. □ Os Acessórios Originais Ford estarão garantidos para aquela que lhe fornecer o maior benefício: 24 meses/ distância ilimitada, ou o restante da sua Garantia Limitada de Veículos Novos Completa de 3 anos/60.000 km. Os Acessórios Licenciados pela Ford (FLA) são garantidos pela garantia do fabricante de acessórios. Os FLA são inteiramente concebidos e desenvolvidos pelo fabricante de acessórios e não foram concebidos ou testados para os requisitos de engenharia da Ford Motor Company. Contacte o seu Concessionário Ford para obter pormenores e/ou uma cópia de todas as garantias limitadas.

As comparações baseiam-se nos modelos da concorrência (a classe é de Sedans Médios), informação publicamente disponível e dados de certificação da Ford, na altura da impressão. Os veículos podem ser mostrados com equipamento opcional. As características podem ser oferecidas somente em combinação com outras opções ou são sujeitas a requisitos/ limitações de encomenda adicionais. As dimensões indicadas podem variar devido às características opcionais e/ou à variabilidade da produção. As informações são fornecidas “tal como são” e podem incluir erros técnicos, tipográficos ou outros. A Ford não oferece garantias, representações ou garantias de qualquer tipo, expressas ou implícitas, incluindo, mas não limitado a, exactidão, actualidade ou integridade, a operação das informações, materiais, conteúdo, disponibilidade e produtos. A Ford reserva-se o direito de alterar as especificações dos produtos, preços e equipamentos a qualquer altura sem incorrer em quaisquer obrigações. O seu concessionário Ford é a melhor fonte para informações mais actualizadas sobre os veículos Ford.



Ecológico



Qualidade



Go Further

